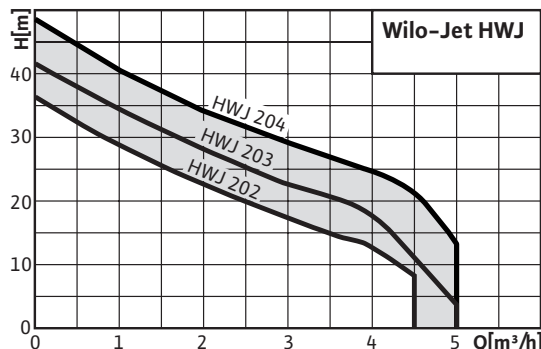


Series description: Wilo-Jet HWJ



Design

Self-priming water-supply unit

Application

- Water supply
- Sprinkling
- Irrigation and spraying
- Pumping water from wells and out of low-lying tanks

Type key

Example:	HWJ 20 L 202 EM
H	System consisting of a pump with diaphragm pressure vessel
WJ	Wilo jet pumps
20 L	Tank size
2	Nominal flow rate Q in m³/h at optimum efficiency
	Index for pump pressure (02 < 03 < 04),
03	version 03 with higher pressure than version 02 (no indication of number of impellers)
EM	Single-phase current, 1~230 V, 50 Hz

Special features/product advantages

- Ideal for outdoor applications (hobby, garden)
- Rust-free stainless steel prevents corrosion, even with prolonged service periods
- Reduction of switch-on frequency and avoidance of fluid hammer, thanks to diaphragm pressure vessel with 20/50 l capacity
- Electrical and hydraulic connections already in place, quick and safe to install

Technical data

- Mains connection 1~230 V, 50 Hz
- Suction head max. 8 m
- Inlet pressure max. 1 bar
- Start-up pressure 1.5 bar
- Variable switch-off pressure
- Fluid temperature +5 °C to +35 °C
- Max. operating pressure 6 bar
- Protection class IP 44
- Connection on pressure side Rp 1
- Suction-side connection G 1

Equipment/function

- Directly flanged motor
- Pressure switch
- Diaphragm pressure vessel
- for use with single-phase motor
 - Connection cable with plug
 - Thermal motor protection switch

Materials

- Pump housing stainless steel 1.4301
- Impeller made of 1.4301 stainless steel
- Shaft made of 1.4005 stainless steel
- Mechanical seal made of carbon/ceramic
- Stage chambers made of Noryl
- Diffuser/injector made of Noryl
- Seal made of NBR

Scope of delivery

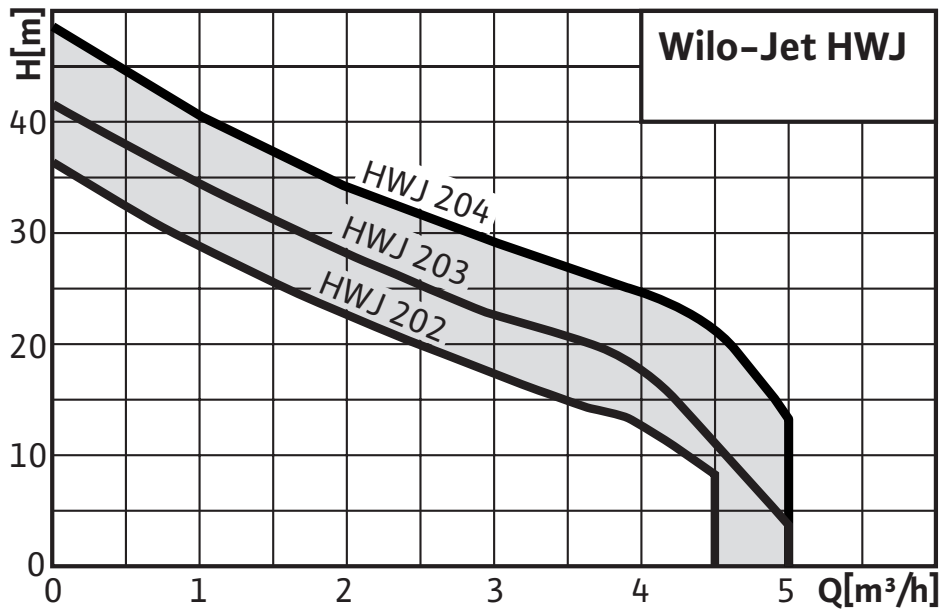
- Pump
- Pressure switch
- Pressure gauge
- Diaphragm pressure vessel (20/50 l)
- Pressure hose with steel casing and screwed connection
- Installation and operating instructions

Accessories

- Suction hose set
- Float switch

Duty chart: Wilo-Jet HWJ

Pump curves



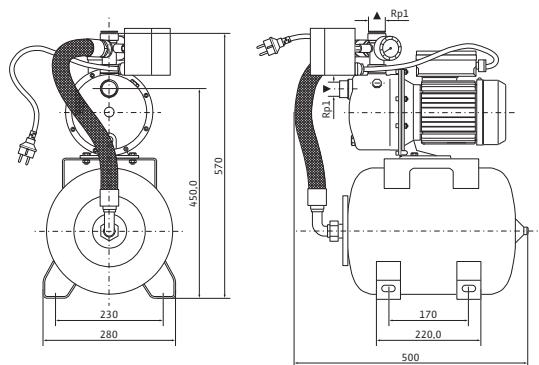
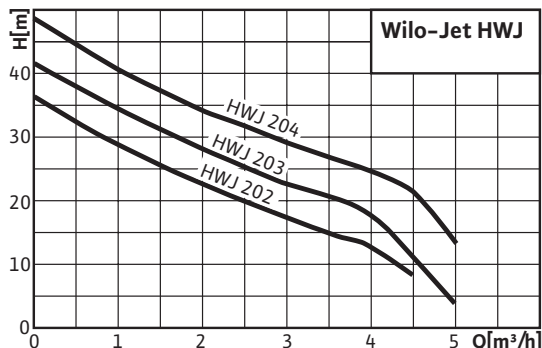
Product list: Wilo-Jet HWJ

Type	Nominal motor power	Cable length from system to switchgear/plug	Gross weight	Art no.
	P_2/W	L/m	m/kg	
HWJ 20 L 202	650	2	17.80	4081527
HWJ 20 L 203	750	2	18.20	4081528
HWJ 20 L 204	1100	2	19.50	2531176
HWJ 50 L 202	650	2	24.40	4081529
HWJ 50 L 203	750	2	24.80	4081530
HWJ 50 L 204	1100	2	26.10	2531177

Data sheet: Wilo-Jet HWJ 20 L 202 (1~230 V)

Pump curves

n = 2850 rpm



Approved fluids (other fluids on request)

Pure water without settling sediment	•
Process water, cold water, cooling water, rainwater	•
Rainwater	–

Output

Max. suction head	H	8.0 m
Max. inlet pressure	H	1 bar
Fluid temperature	T	+5...+35 °C
Max. ambient temperature	T	40 °C
Standard version for operating pressure	p_{max}	6 bar
Nominal speed	n	2850 rpm

Motor/electronics

Protection class		IP 44
Insulation class		B
Nominal motor power	P_2	0.6500 kW
Power consumption	P_1	0.8500 kW
Mains connection		1~230 V, 50 Hz

Pipe connections

Nominal connection diameter on the pressure side		Rp 1
Nominal connection diameter on suction side		G 1

Materials

Pump housing		1.4301
Impeller		1.4301
Pump shaft		1.4005
Mechanical seal		Carbon/ceramic
Stage chambers		Noryl
Diffuser/Injector		Noryl
Seal		NBR

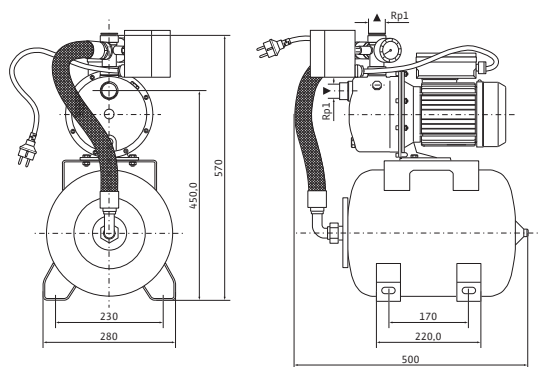
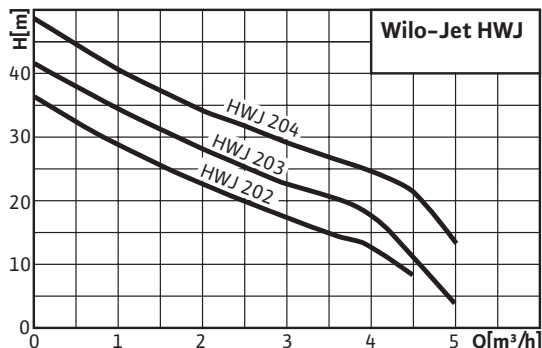
Information for order placements

Make		Wilo
Type		HWJ 20 L 202
Art no.		4081527
Weight approx.	m	17.1 kg

Data sheet: Wilo-Jet HWJ 20 L 203 (1~230 V)

Pump curves

n = 2850 rpm



Approved fluids (other fluids on request)

Pure water without settling sediment	•
Process water, cold water, cooling water, rainwater	•
Rainwater	–

Output

Max. suction head	H	8.0 m
Max. inlet pressure	H	1 bar
Fluid temperature	T	+5...+35 °C
Max. ambient temperature	T	40 °C
Standard version for operating pressure	p_{max}	6 bar
Nominal speed	n	2850 rpm

Motor/electronics

Protection class		IP 44
Insulation class		B
Nominal motor power	P_2	0.7500 kW
Power consumption	P_1	1 kW
Mains connection		1~230 V, 50 Hz

Pipe connections

Nominal connection diameter on the pressure side		Rp 1
Nominal connection diameter on suction side		G 1

Materials

Pump housing		1.4301
Impeller		1.4301
Pump shaft		1.4005
Mechanical seal		Carbon/ceramic
Stage chambers		Noryl
Diffuser/Injector		Noryl
Seal		NBR

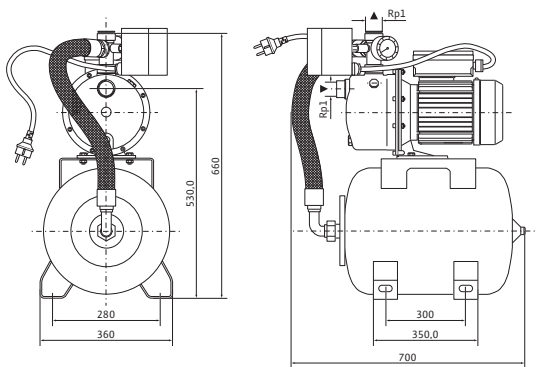
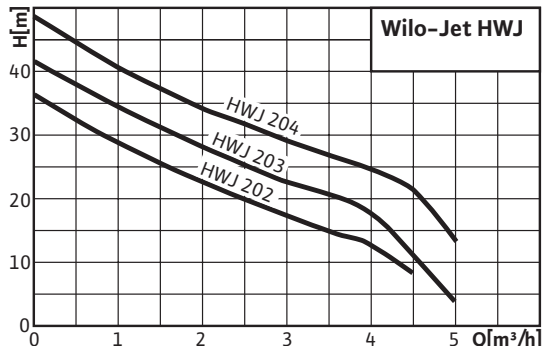
Information for order placements

Make		Wilo
Type		HWJ 20 L 203
Art no.		4081528
Weight approx.	m	18.5 kg

Data sheet: Wilo-Jet HWJ 50 L 202 (1~230 V)

Pump curves

n = 2850 rpm



Approved fluids (other fluids on request)

Pure water without settling sediment	•
Process water, cold water, cooling water, rainwater	•
Rainwater	–

Output

Max. suction head	H	8.0 m
Max. inlet pressure	H	1 bar
Fluid temperature	T	+5...+35 °C
Max. ambient temperature	T	40 °C
Standard version for operating pressure	p_{max}	6 bar
Nominal speed	n	2850 rpm

Motor/electronics

Protection class		IP 44
Insulation class		B
Nominal motor power	P_2	0.6500 kW
Power consumption	P_1	0.8500 kW
Mains connection		1~230 V, 50 Hz

Pipe connections

Nominal connection diameter on the pressure side		Rp 1
Nominal connection diameter on suction side		G 1

Materials

Pump housing		1.4301
Impeller		1.4301
Pump shaft		1.4005
Mechanical seal		Carbon/ceramic
Stage chambers		Noryl
Diffuser/Injector		Noryl
Seal		NBR

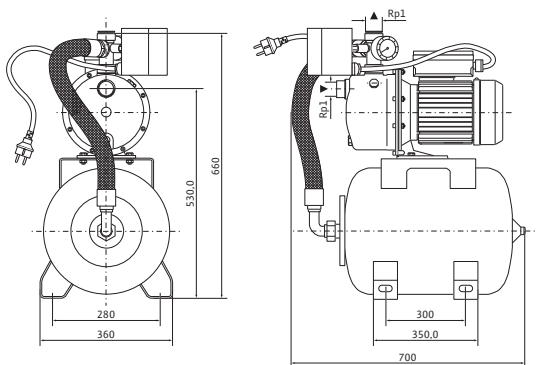
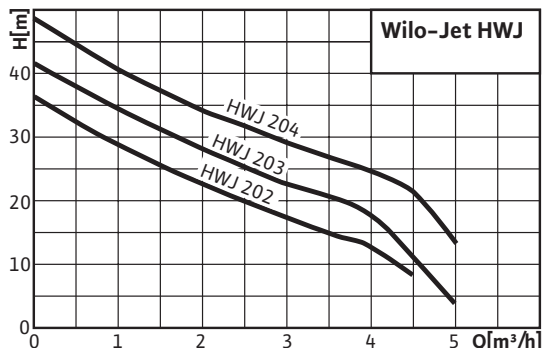
Information for order placements

Make		Wilo
Type		HWJ 50 L 202
Art no.		4081529
Weight approx.	m	23.8 kg

Data sheet: Wilo-Jet HWJ 50 L 203 (1~230 V)

Pump curves

n = 2850 rpm



Approved fluids (other fluids on request)

Pure water without settling sediment	•
Process water, cold water, cooling water, rainwater	•
Rainwater	–

Output

Max. suction head	H	8.0 m
Max. inlet pressure	H	1 bar
Fluid temperature	T	+5...+35 °C
Max. ambient temperature	T	40 °C
Standard version for operating pressure	p_{max}	6 bar
Nominal speed	n	2850 rpm

Motor/electronics

Protection class		IP 44
Insulation class		B
Nominal motor power	P_2	0.7500 kW
Power consumption	P_1	1 kW
Mains connection		1~230 V, 50 Hz

Pipe connections

Nominal connection diameter on the pressure side		Rp 1
Nominal connection diameter on suction side		G 1

Materials

Pump housing		1.4301
Impeller		1.4301
Pump shaft		1.4005
Mechanical seal		Carbon/ceramic
Stage chambers		Noryl
Diffuser/Injector		Noryl
Seal		NBR

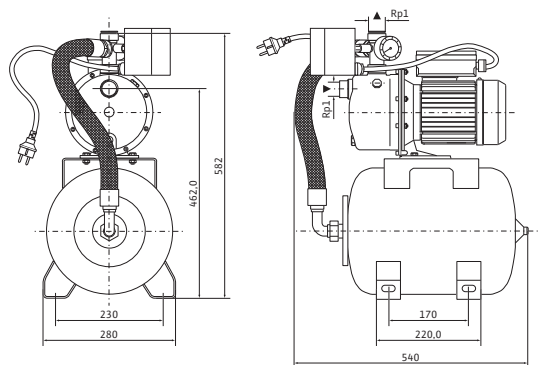
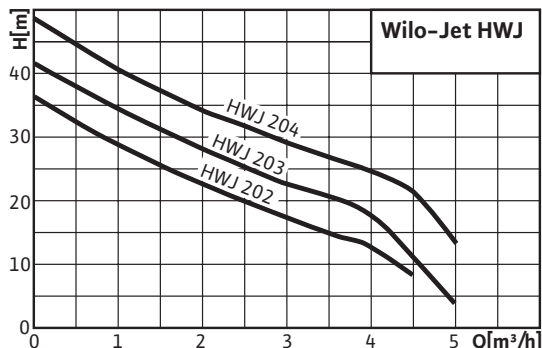
Information for order placements

Make		Wilo
Type		HWJ 50 L 203
Art no.		4081530
Weight approx.	m	24.9 kg

Data sheet: Wilo-Jet HWJ 20 L 204 (1~230 V)

Pump curves

n = 2850 rpm



Approved fluids (other fluids on request)

Pure water without settling sediment	•
Process water, cold water, cooling water, rainwater	•
Rainwater	–

Output

Max. suction head	H	8.0 m
Max. inlet pressure	H	1 bar
Fluid temperature	T	+5...+35 °C
Max. ambient temperature	T	40 °C
Standard version for operating pressure	p_{max}	6 bar
Nominal speed	n	2850 rpm

Motor/electronics

Protection class		IP 44
Insulation class		B
Nominal motor power	P_2	1.1000 kW
Power consumption	P_1	1.3000 kW
Mains connection		1~230 V, 50 Hz

Pipe connections

Nominal connection diameter on the pressure side		Rp 1
Nominal connection diameter on suction side		G 1

Materials

Pump housing		1.4301
Impeller		1.4301
Pump shaft		1.4005
Mechanical seal		Carbon/ceramic
Stage chambers		Noryl
Diffuser/Injector		Noryl
Seal		NBR

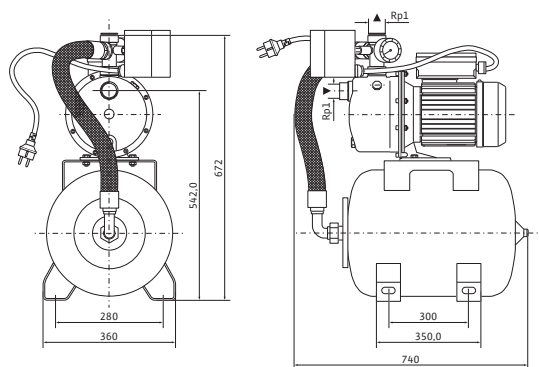
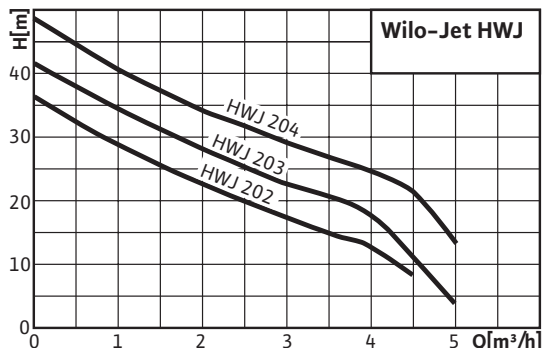
Information for order placements

Make		Wilo
Type		HWJ 20 L 204
Art no.		2531176
Weight approx.	m	18.5 kg

Data sheet: Wilo-Jet HWJ 50 L 204 (1~230 V)

Pump curves

n = 2850 rpm



Approved fluids (other fluids on request)

Pure water without settling sediment	•
Process water, cold water, cooling water, rainwater	•
Rainwater	–

Output

Max. suction head	H	8.0 m
Max. inlet pressure	H	1 bar
Fluid temperature	T	+5...+35 °C
Max. ambient temperature	T	40 °C
Standard version for operating pressure	p_{max}	6 bar
Nominal speed	n	2850 rpm

Motor/electronics

Protection class		IP 44
Insulation class		B
Nominal motor power	P_2	1.1000 kW
Power consumption	P_1	1.3000 kW
Mains connection		1~230 V, 50 Hz

Pipe connections

Nominal connection diameter on the pressure side		Rp 1
Nominal connection diameter on suction side		G 1

Materials

Pump housing		1.4301
Impeller		1.4301
Pump shaft		1.4005
Mechanical seal		Carbon/ceramic
Stage chambers		Noryl
Diffuser/Injector		Noryl
Seal		NBR

Information for order placements

Make		Wilo
Type		HWJ 50 L 204
Art no.		2531177
Weight approx.	m	24.1 kg