



# atac

ATAC Solutions Ltd is a leading environmental engineering company based in Maidstone, United Kingdom.

ATAC Solutions is known for its state-of-the-art liquid collection fleet and its expertise in providing bespoke turnkey wastewater process solutions.

With a focus on sustainability and accreditation in ISO 9001 & ISO 14001, the company serves domestic and industrial clients across the South-East and London.

ATAC Solutions Ltd,  
Unit A9, Loc 8 Business Park, Ashford Road,  
Hollingbourne, Maidstone, England, ME17 1WR

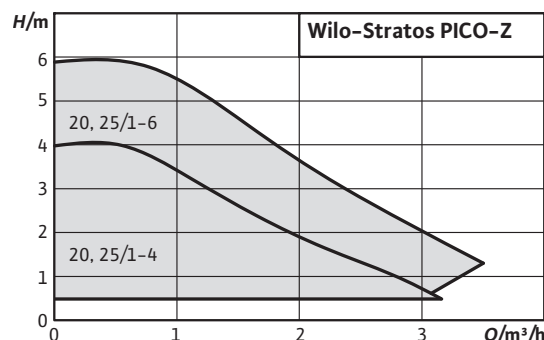
 [atacsolutions.com](https://www.atacsolutions.com)  
 01622 882400

Axiom Water companies



## Series description: Wilo-Stratos PICO-Z



### Design

Glandless circulation pump with threaded connection, blocking-current proof EC motor and integrated electronic power control.

### Type key

Example: **Wilo-Stratos PICO-Z 20/1-4**

<b>Stratos PICO</b>	High-efficiency pump (screw-end pump), electronically controlled
<b>Z/</b>	domestic hot water circulation
<b>20/</b>	Nominal connection diameter
<b>1-4</b>	Nominal delivery head range [m]

### Special features/product advantages

- Manual and temperature-controlled mode for optimum operation
- Identification of the thermal disinfection of the domestic hot water tank
- Display of the current consumption in Watts and the cumulative kilowatt hours or of the current flow and the temperature
- Stainless steel pump housing protects against bacteria and corrosion
- Wilo-Connector

### Technical data

- Fluid temperature of drinking water up to 3.57 mmol/l (20 °dH): +2 °C to +70 °C in short-term operation (4 h): +2 °C to +75 °C
- Mains connection 1~230 V, 50 Hz
- Protection class IP X4D
- Threaded connection Rp ¾ and Rp 1
- Max. operating pressure: 10 bar

### Equipment/function

#### Operating modes

- $\Delta p$ -c for constant differential pressure
- Temperature-controlled mode

#### Manual functions

- Setting the operating mode
- Setting of pump output (delivery head)
- Setting the minimum temperature
- Setting of the minimum flow
- Reset function for resetting the electricity meter
- Reset function for resetting to factory settings
- "Hold" function (key lock) for disabling the settings

#### Automatic functions

- Infinitely variable power adjustment according to the operating mode
- Temperature control for maintaining a constant return temperature in the domestic hot water circulation system
- Thermal disinfection routine (detecting and supporting the thermal disinfection of the domestic hot water storage tank)
- Automatic deblocking function

#### Signal and display functions

- Display of the current power consumption in W
- Display of the cumulative kilowatt hours in kWh
- Display of effective flow in m³/h
- Display of the current temperature in °C
- Indication of fault signals (error codes)

#### Equipment

- Wrench attachment point on pump body
- Quick electrical connection with Wilo-Connector
- Blocking-current proof motor
- Particle filter
- Thermal insulation as standard

### Scope of delivery

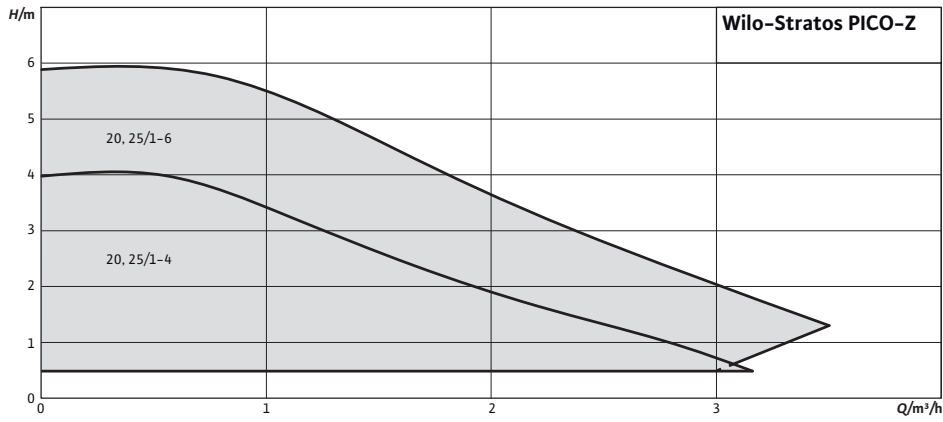
- Pump
- Thermal insulation
- Wilo-Connector
- Gaskets
- Installation and operating instructions

### Accessories

- Screwed connections
- Adapter fittings
- Angle plug with 2 m connecting cable

Duty chart: Wilo-Stratos PICO-Z

Pump curves

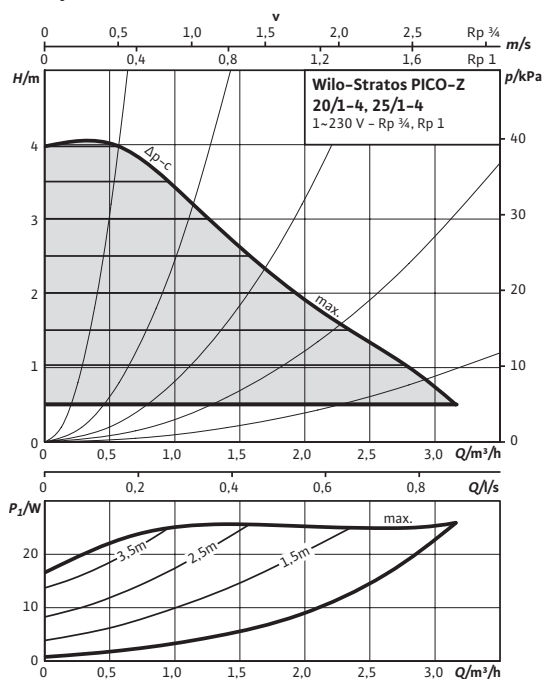


## Product list: Wilo-Stratos PICO-Z

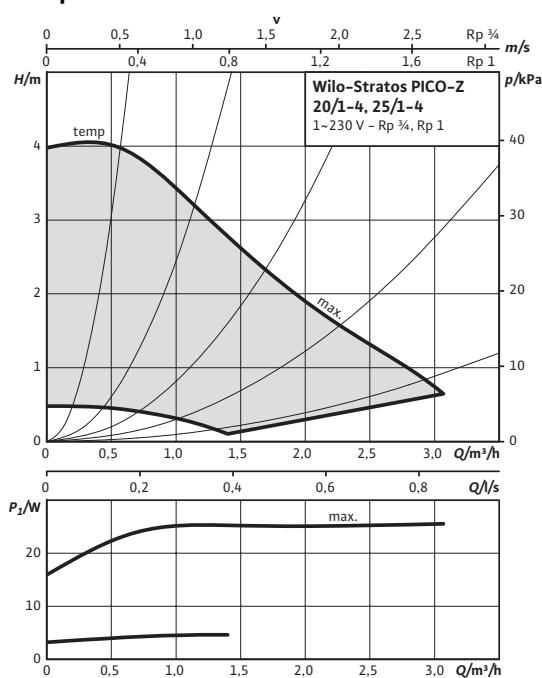
Type	Max. volume flow	Max. delivery head	Threaded pipe union	Rated pressure	Overall length	Mains connection	Gross weight	Pieces per pallet	Art no.
	$Q_{max}/m^3/h$	$H_{max}/m$		$PN/bar$	$L0/mm$		$m/kg$		
Stratos PICO-Z 20/1-4	2	4	R ¾	10	150	1~230 V, 50/60 Hz	2.0	150	4184690
Stratos PICO-Z 20/1-6	2	6	R ¾	10	150	1~230 V, 50/60 Hz	2.0	150	4184691
Stratos PICO-Z 25/1-4	2	4	R 1	10	180	1~230 V, 50/60 Hz	2.1	150	4184692
Stratos PICO-Z 25/1-6	2	6	R 1	10	180	1~230 V, 50/60 Hz	2.1	150	4184693

## Data sheet: Wilo-Stratos PICO-Z 20/1-4

### Pump curves



### Pump curves



### Approved fluids (other fluids on request)

Drinking water and water for food-processing companies in accordance with TrinkwV 2001 (drinking water ordinance)

### Permitted field of application

Temperature range for applications in domestic hot water circulation systems at maximum ambient temperature of +40°C

Max. permitted total hardness in domestic hot water circulation systems 3.57 mmol/l (20 °dH)

Maximum permissible operating pressure  $P_{max}$  10 bar

### Pipe connections

Threaded pipe union R ¾

Thread G 1¼

Overall length  $L_0$  150 mm

### Motor/electronics

Electromagnetic compatibility EN 61800-3

Emitted interference EN 61000-6-3

Interference resistance EN 61000-6-2

Speed control Frequency converter

Protection class IP X4D

Insulation class F

Mains connection 1~230 V, 50/60 Hz

Speed  $n$  1200 - 3500 rpm

Power consumption  $P_1$  3 - 25 W

Current consumption  $I$  max. 0.33 A

Motor protection Not required (blocking-current proof)

### Materials

Pump housing Stainless steel

Impeller Plastic (PPE/PS - 30% GF)

Pump shaft Stainless steel

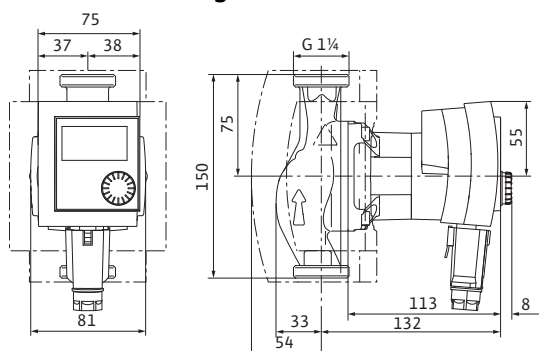
Bearing Carbon, synthetic resin impregnated

### Minimum suction head at suction port for avoiding cavitation at water pumping temperature

Minimum suction head at 50 / 95 °C 0.5 / 3 m

## Data sheet: Wilo-Stratos PICO-Z 20/1-4

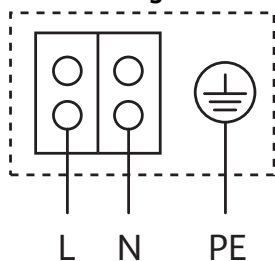
### Dimension drawing



### Information for order placements

Make	Wilo	
Type	Stratos PICO-Z 20/1-4	
Art no.	4184690	
Weight approx.	<i>m</i>	2 kg

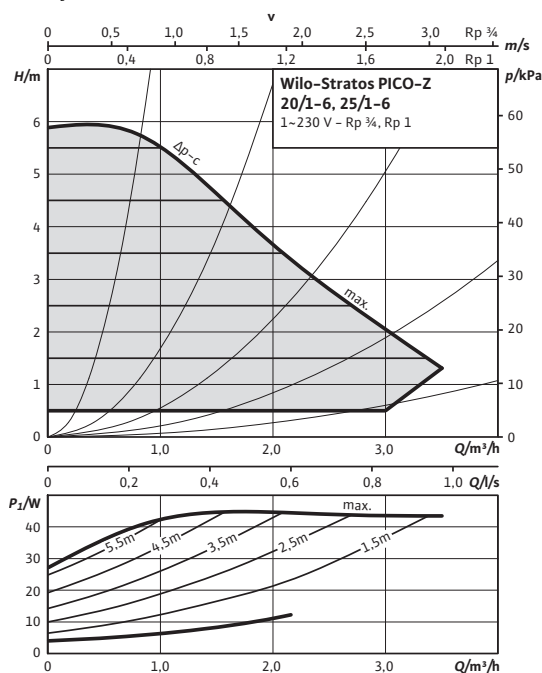
### Terminal diagram



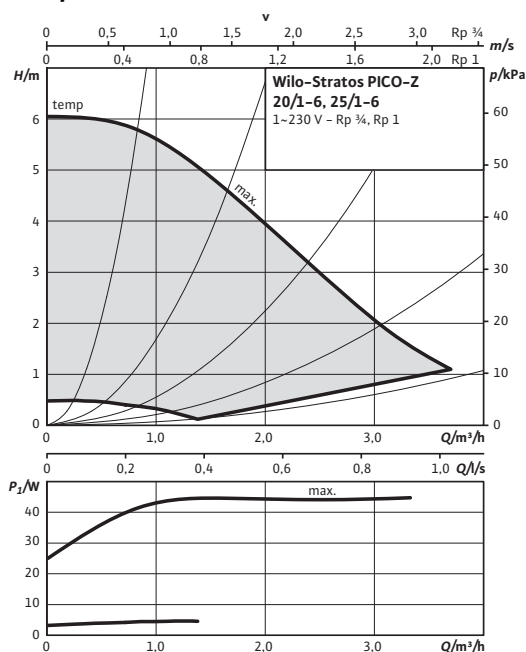
Blocking current-proof motor  
Single-phase motor (EM) 2-pole - 1~230 V, 50 Hz

## Data sheet: Wilo-Stratos PICO-Z 20/1-6

### Pump curves



### Pump curves



### Approved fluids (other fluids on request)

Drinking water and water for food-processing companies in accordance with TrinkwV 2001 (drinking water ordinance)

### Permitted field of application

Temperature range for applications in domestic hot water circulation systems at maximum ambient temperature of +40°C

Max. permitted total hardness in domestic hot water circulation systems 3.57 mmol/l (20 °dH)

Maximum permissible operating pressure  $P_{max}$  10 bar

### Pipe connections

Threaded pipe union R ¾

Thread G 1¼

Overall length  $L_0$  150 mm

### Motor/electronics

Electromagnetic compatibility EN 61800-3

Emitted interference EN 61000-6-3

Interference resistance EN 61000-6-2

Speed control Frequency converter

Protection class IP X4D

Insulation class F

Mains connection 1~230 V, 50/60 Hz

Speed  $n$  1200 - 4200 rpm

Power consumption  $P_1$  3 - 45 W

Current consumption  $I$  max. 0.49 A

Motor protection Not required (blocking-current proof)

### Materials

Pump housing Stainless steel

Impeller Plastic (PPE/PS - 30% GF)

Pump shaft Stainless steel

Bearing Carbon, synthetic resin impregnated

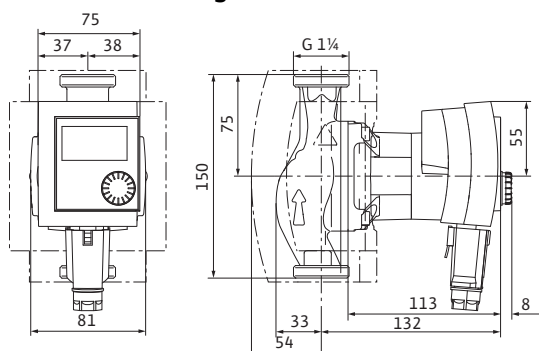
### Minimum suction head at suction port for avoiding cavitation at water pumping temperature

Minimum suction head at 50 / 95 °C 0.5 / 3 m



## Data sheet: Wilo-Stratos PICO-Z 20/1-6

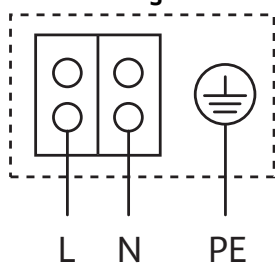
### Dimension drawing



### Information for order placements

Make	Wilo	
Type	Stratos PICO-Z 20/1-6	
Art no.	4184691	
Weight approx.	<i>m</i>	2 kg

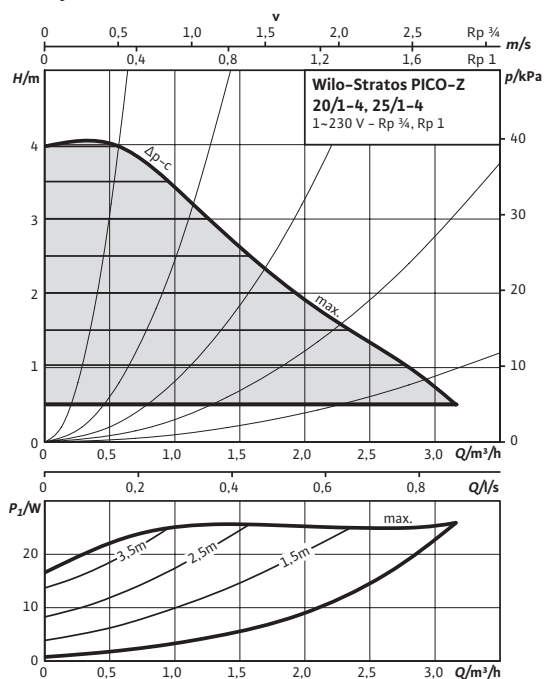
### Terminal diagram



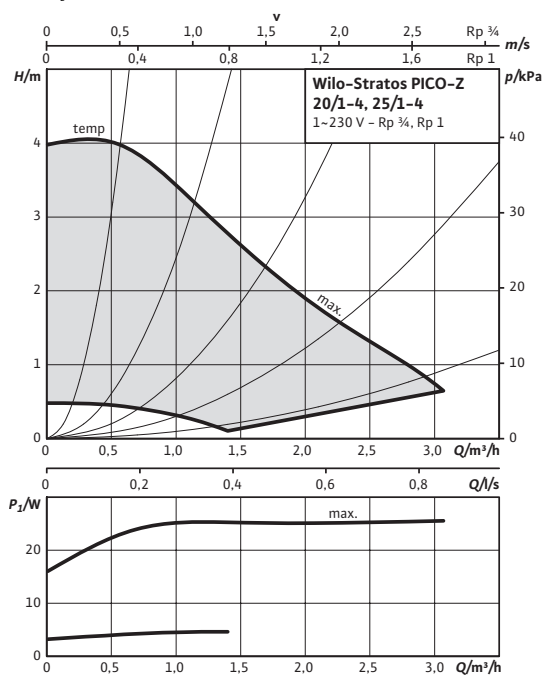
Blocking current-proof motor  
Single-phase motor (EM) 2-pole - 1~230 V, 50 Hz

## Data sheet: Wilo-Stratos PICO-Z 25/1-4

### Pump curves



### Pump curves



### Approved fluids (other fluids on request)

Drinking water and water for food-processing companies in accordance with TrinkwV 2001 (drinking water ordinance)

### Permitted field of application

Temperature range for applications in domestic hot water circulation systems at maximum ambient temperature of +40°C

Max. permitted total hardness in domestic hot water circulation systems 3.57 mmol/l (20 °dH)

Maximum permissible operating pressure  $P_{max}$  10 bar

### Pipe connections

Threaded pipe union R 1

Thread G 1½

Overall length  $L_0$  180 mm

### Motor/electronics

Electromagnetic compatibility EN 61800-3

Emitted interference EN 61000-6-3

Interference resistance EN 61000-6-2

Speed control Frequency converter

Protection class IP X4D

Insulation class F

Mains connection 1~230 V, 50/60 Hz

Speed  $n$  1200 - 3500 rpm

Power consumption  $P_1$  3 - 25 W

Current consumption  $I$  max. 0.33 A

Motor protection Not required (blocking-current proof)

### Materials

Pump housing Stainless steel

Impeller Plastic (PPE/PS - 30% GF)

Pump shaft Stainless steel

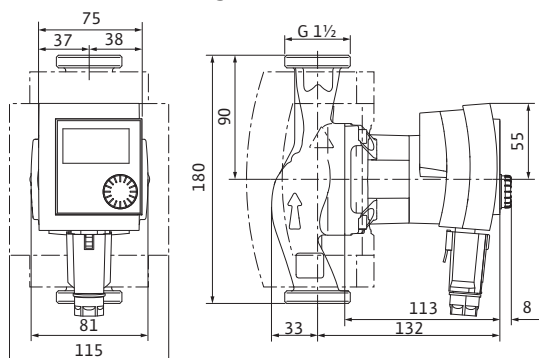
Bearing Carbon, synthetic resin impregnated

### Minimum suction head at suction port for avoiding cavitation at water pumping temperature

Minimum suction head at 50 / 95 °C 0.5 / 3 m

## Data sheet: Wilo-Stratos PICO-Z 25/1-4

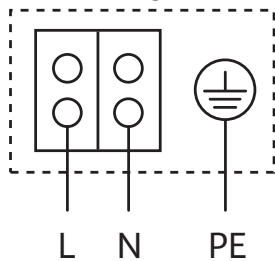
### Dimension drawing



### Information for order placements

Make	Wilo	
Type	Stratos PICO-Z 25/1-4	
Art no.	4184692	
Weight approx.	<i>m</i>	2 kg

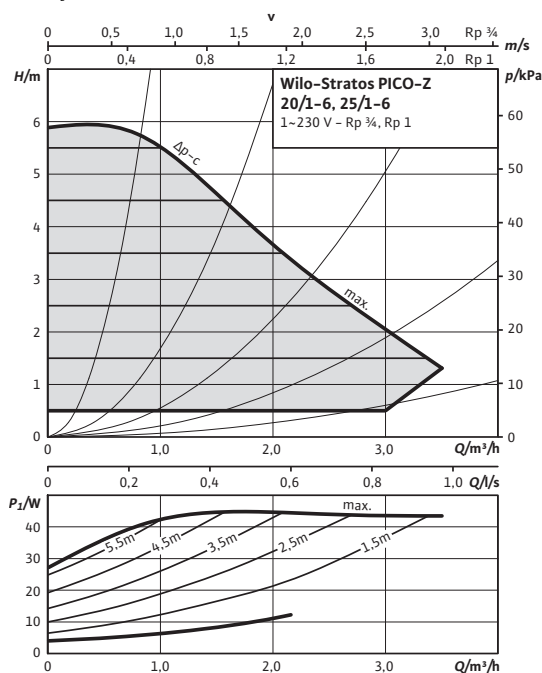
### Terminal diagram



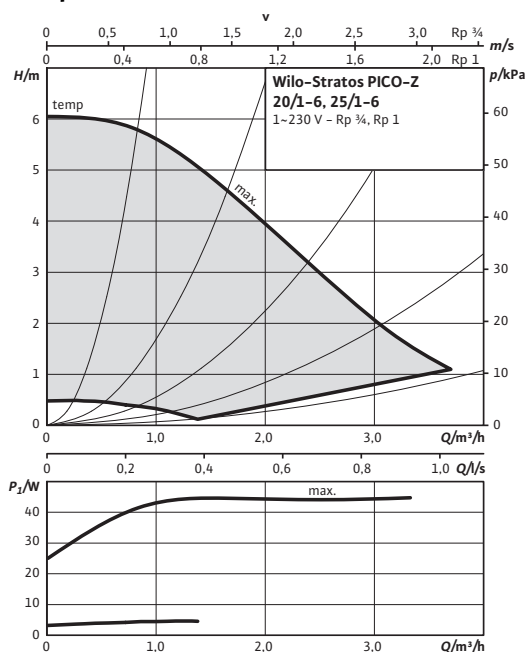
Blocking current-proof motor  
Single-phase motor (EM) 2-pole - 1~230 V, 50 Hz

## Data sheet: Wilo-Stratos PICO-Z 25/1-6

### Pump curves



### Pump curves



### Approved fluids (other fluids on request)

Drinking water and water for food-processing companies in accordance with TrinkwV 2001 (drinking water ordinance)

### Permitted field of application

Temperature range for applications in domestic hot water circulation systems at maximum ambient temperature of +40°C

Max. permitted total hardness in domestic hot water circulation systems 3.57 mmol/l (20 °dH)

Maximum permissible operating pressure  $P_{max}$  10 bar

### Pipe connections

Threaded pipe union R 1

Thread G 1½

Overall length  $L_0$  180 mm

### Motor/electronics

Electromagnetic compatibility EN 61800-3

Emitted interference EN 61000-6-3

Interference resistance EN 61000-6-2

Speed control Frequency converter

Protection class IP X4D

Insulation class F

Mains connection 1~230 V, 50/60 Hz

Speed  $n$  1200 - 4200 rpm

Power consumption  $P_1$  3 - 45 W

Current consumption  $I$  max. 0.49 A

Motor protection Not required (blocking-current proof)

### Materials

Pump housing Stainless steel

Impeller Plastic (PPE/PS - 30% GF)

Pump shaft Stainless steel

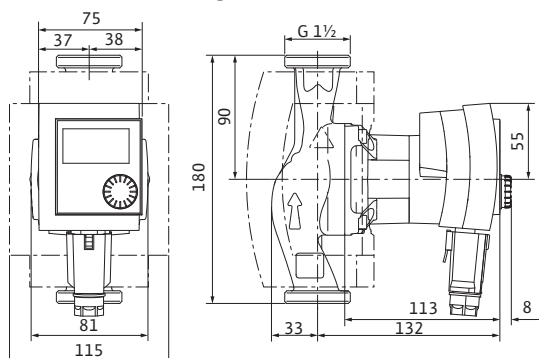
Bearing Carbon, synthetic resin impregnated

### Minimum suction head at suction port for avoiding cavitation at water pumping temperature

Minimum suction head at 50 / 95 °C 0.5 / 3 m

## Data sheet: Wilo-Stratos PICO-Z 25/1-6

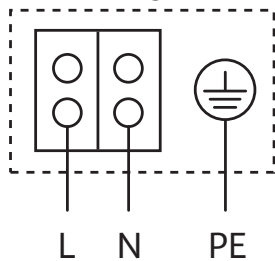
### Dimension drawing



### Information for order placements

Make	Wilo	
Type	Stratos PICO-Z 25/1-6	
Art no.	4184693	
Weight approx.	<i>m</i>	2 kg

### Terminal diagram



Blocking current-proof motor  
Single-phase motor (EM) 2-pole - 1~230 V, 50 Hz