



atac

ATAC Solutions Ltd is a leading environmental engineering company based in Maidstone, United Kingdom.

ATAC Solutions is known for its state-of-the-art liquid collection fleet and its expertise in providing bespoke turnkey wastewater process solutions.

With a focus on sustainability and accreditation in ISO 9001 & ISO 14001, the company serves domestic and industrial clients across the South-East and London.

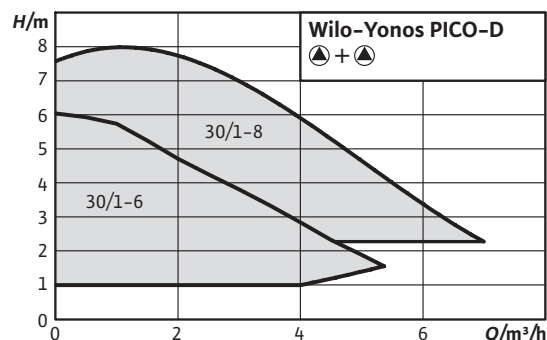
ATAC Solutions Ltd,
Unit A9, Loc 8 Business Park, Ashford Road,
Hollingbourne, Maidstone, England, ME17 1WR

 [atacsolutions.com](https://www.atacsolutions.com)
 01622 882400

Axiom Water companies

Series description: Wilo-Yonos PICO-D



Design

Glandless circulation double pump with threaded connection, blocking-current proof EC motor and integrated electronic power control.

Application

All hot water heating systems, air-conditioning applications, industrial circulation systems.

Type key

Example: **Wilo-Yonos PICO-D 30/1-6**

Yonos PICO High-efficiency pump (screw-end pump), electronically controlled

-D Double pump

30/ Nominal connection diameter

1-6 Nominal delivery head range [m]

Special features/product advantages

- LED display for adjusting the setpoint in 0.1 m increments and showing effective consumption
- Tool-free electrical connection using the Wilo-Connector
- Unique pump venting function per pump
- Double pump for individual (Δp -c and Δp -v) or parallel operation (Δp -c)
- Very high starting torque for reliable starting

Technical data

- Energy efficiency index (EEI) from ≤ 0.20

Equipment/function

Operating modes

- Δp -c for constant differential pressure
- Δp -v for variable differential pressure

Manual functions

- Setting the operating mode
- Setting of pump output (delivery head)
- Venting function

Automatic functions

- Infinitely variable power adjustment according to the operating mode
- Automatic deblocking function

Signal and display functions

- Display of power consumption in W
- Display of the current pumping head for setting
- Indication of fault signals (error codes)

Equipment

- Quick electrical connection with Wilo-Connector
- Venting function
- Blocking-current proof motor
- Particle filter

Double pump function

- Main/standby mode (automatic fault-actuated switchover/time-dependent pump cycling). If the double pump is to be operated in the main/standby mode, the control mode and the delivery head must be set so they are identical.
- Parallel operation (efficiency-optimised peak-load activation and deactivation). If the double pump is to be operated in parallel/peak-load operation, the control mode Δp -c must be set with the same delivery head.

An additional switchgear is required for switching the pumps, e.g. in the event of a fault.

Scope of delivery

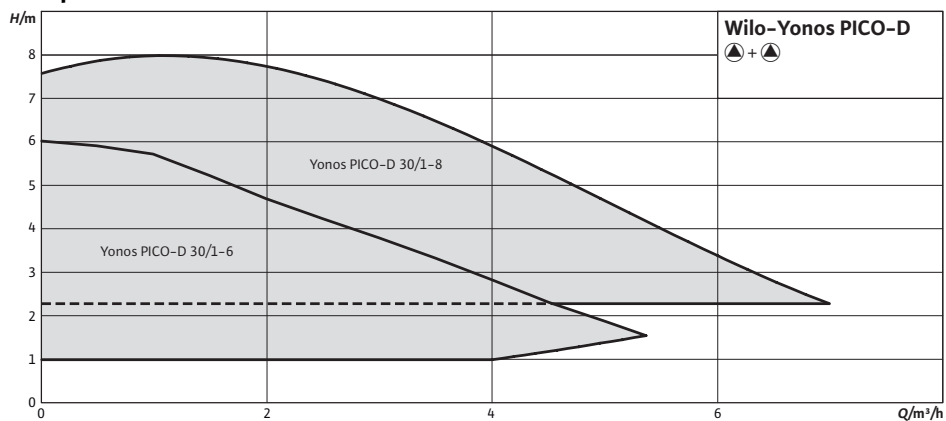
- Pump
- Wilo-Connector
- Gaskets
- Installation and operating instructions

Accessories

- Screwed connections
- Adapter fittings
- Angle plug, angled to the left, with permanently attached (cast) 2 m connecting cable

Duty chart: Wilo-Yonos PICO-D

Pump curves

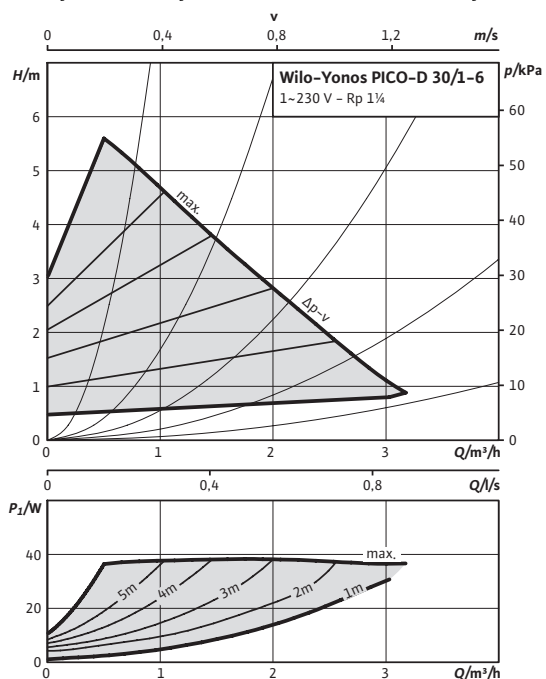


Product list: Wilo-Yonos PICO-D

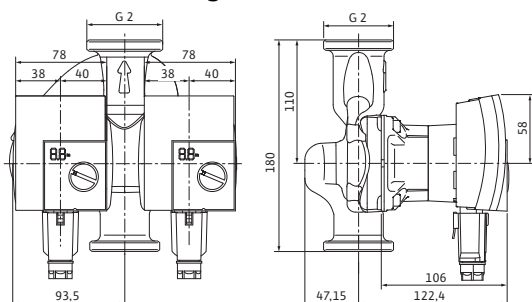
Type	Max. volume flow	Max. delivery head	Energy efficiency index (EEI)	Rated pressure	Mains connection	Gross weight	Art no.
	$Q_{max}/m^3/h$	H_{max}/m		PN/bar		m/kg	
Yonos PICO-D 30/1-6	5.5	6.0	≤ 0.20	6	1~230 V, 50/60 Hz	5.2	4178164

Data sheet: Wilo-Yonos PICO-D 30/1-6

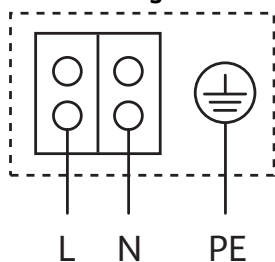
Pump curves $\Delta p-v$ (variable) individual operation



Dimension drawing



Terminal diagram



Approved fluids (other fluids on request)

Heating water (in accordance with VDI 2035)	•
Water-glycol mixtures (max. 1:1; above 20% admixture, the pumping data must be checked)	•
Drinking water and water for food-processing companies in accordance with TrinkwV 2001 (drinking water ordinance)	-

Permitted field of application

Maximum permissible operating pressure	P_{max}	6 bar
Special version for operating pressure	P_{max}	-

Pipe connections

Threaded pipe union	Rp 1¼
Thread	G 2

Motor/electronics

Energy efficiency index (EEI)	≤ 0.20	
Electromagnetic compatibility	EN 61800-3	
Emitted interference	EN 61000-6-3	
Interference resistance	EN 61000-6-2	
Speed control	Frequency converter	
Protection class	IP X2D	
Insulation class	F	
Mains connection	1~230 V, 50/60 Hz	
Rated power	P_2	30.00 W
Speed	n	800 - 4700 rpm
Power consumption	P_1	4 - 40 W
Current consumption	I	max. 0.44 A
Motor protection	Not required (blocking-current proof)	

Materials

Pump housing	Grey cast iron (EN-GJL-200)
Impeller	Plastic (PP - 40% GF)
Pump shaft	Stainless steel
Bearing	Carbon, metal impregnated

Minimum suction head at suction port for avoiding cavitation at water pumping temperature

Data sheet: Wilo-Yonos PICO-D 30/1-6

Minimum suction head at 50 / 95 / 110 °C	0.5 / 3 / 10 m
--	----------------

Information for order placements

Make	Wilo
Type	Yonos PICO-D 30/1-6
Art no.	4198299
Weight approx.	<i>m</i> 5 kg