



ATAC Solutions Ltd is a leading environmental engineering company based in Maidstone, United Kingdom.

ATAC Solutions is known for its state-of-the-art liquid collection fleet and its expertise in providing bespoke turnkey wastewater process solutions.

With a focus on sustainability and accreditation in ISO 9001 & ISO 14001, the company serves domestic and industrial clients across the South-East and London.



ATAC Solutions Ltd,
Unit A9, Loc 8 Business Park, Ashford Road,
Hollingbourne, Maidstone, England, ME17 1WR

 atacsolutions.com
 01622 882400

     
Axiom Water companies

FEKAFOS 280 DOUBLE

AUTOMATIC PUMPING STATION



WASTE WATER COLLECTION AND LIFTING

Automatic collection and lifting stations, used for collecting and pumping civil and industrial waste water in sewers.

Comprises a high density 280 litre polythene tank with removable cover complete with a watertight and gastight seal. Fekafos series is suitable only for the use of one or two not automatic single/triphas pumps from the following: **DN 50 (FEKA VS-VX 550 M-NA /T-NA - FEKA VS-VX 750 M-NA /T-NA - FEKA VS-VX 1000 M-NA /T-NA - FEKA VS-VX 1200 M-NA /T-NA) DN 65 (FEKA 2500.4T, FEKA 2515-FEKA 2500-FEKA 2700.2T) to be ordered separately.**

Complete with: 3 bulb floats mounted on a stainless steel support, cable holder for connecting the float and pump cables to the electrical panel (**to order separately according to performance range table**), DN50 and DN110 suction manifolds and 2" delivery manifolds, connector for DN50 vent tube, lifting devices (DSD2) for making pump maintenance easier. An alarm float can be used on request.

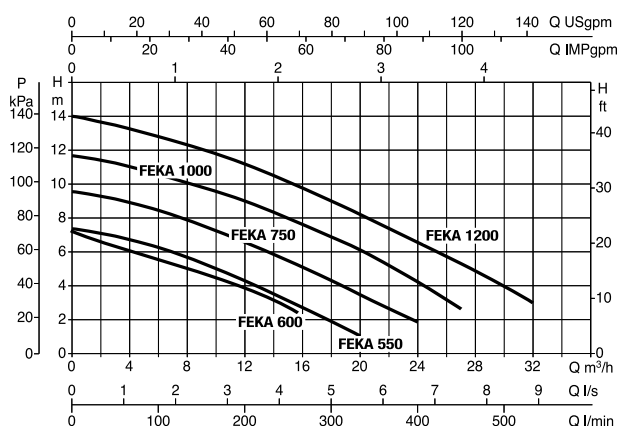
Operating range: from 1 to 48 m³/h with a head of up to 23 m.

Liquid temperature range: +50°C.

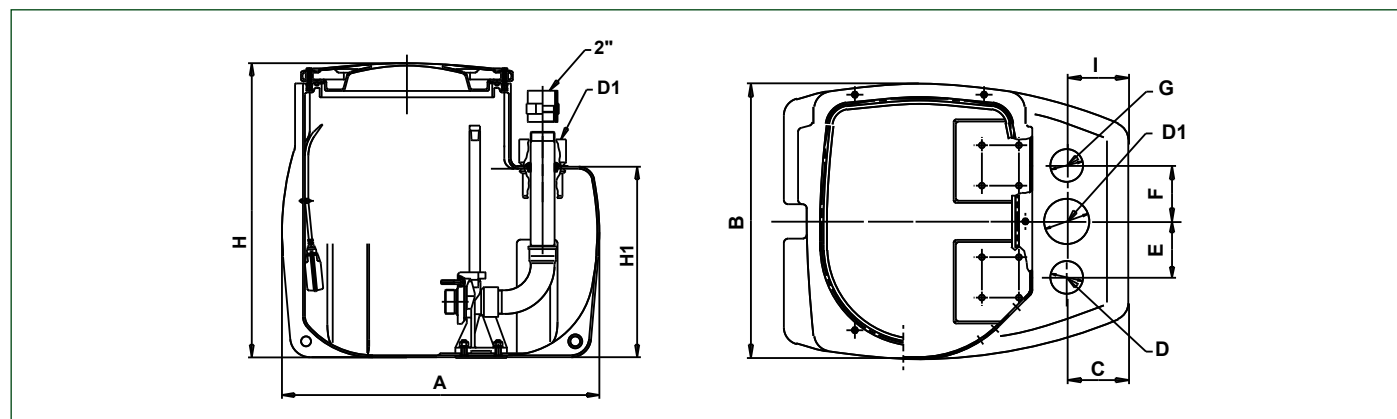
Pumped liquid: ground water, rain water, clear waste water, black waste water and water from rivers and lakes.

TECHNICAL DATA

MODEL	CODE	CAPACITY [lt]	DIMENSION [mm]	TO BE USED WITH	DN PIPES [mm]
FEKAFOS 280 2" DOUBLE	60114012	280	750x585x900	DN 50: FEKA VS/VX 550-750-1000-1200 M-NA/T GRINDER 1000-1200-1600 T, GRINDER 1400 M-1800 T FEKA 1400 M-1800 T DN 65: FEKA 2500.4T, FEKA 2515-FEKA 2500-FEKA 2700.2T	2x DN150, 3x DN110, 2x DN50 inlet 1x DN50 ventilation 1x DN40 emergency emptying
FEKAFOS 280 2" 1/2 DOUBLE	60114036				



DIMENSIONS AND WEIGHTS



MODEL	A	B	C	D	D1	E	F	G	H	H1	I	WEIGHT Kg.
FEKAFOS 280 DOUBLE/...	800	640	145	DN 50	DN 110	130	130	2"	745	480	145	54